

Power Retouche Retouching Suite

A Photoshop plugin to apply graduated colors in retouching

Power Retouche Graduated Color plugin is an advanced digital equivalent of traditional graduated color filters. It lets you have one or two colors and quickly set one color to the complementary of the other. Rotate any direction you want. Change the contrast and even the midpoint of the graduation.



Power Retouche Photoshop plug-ins are also for Paint Shop Pro, Corel Draw, Illustrator, Fireworks and other graphic software or photo software (Mac & Windows) see [list](#)

Graduated Color plugin

Benefits of the plugin

- Apply one or two graduated colors in either uniform or photographic mode
- Set the direction of the graduation to any angle of 360 degrees
- Control the contrast and midpoint of the graduation
- Target retouching to lights, midtones or darks independently

The Graduated Color plugin works with these image modes (Windows and Mac)...
8 & 16 bit / channel: RGB, CMYK, Multichannel.

Graduated Color controls

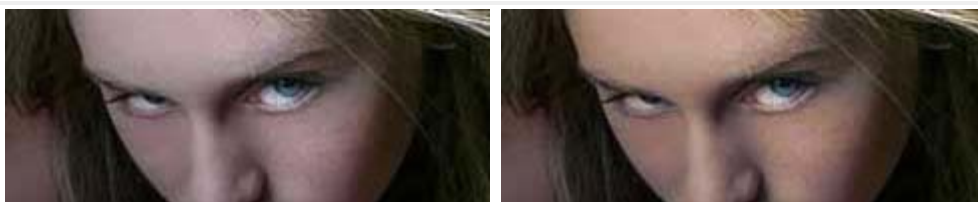
This is the Graduated Color plugins controlpanel (Windows). Click on the image to enlarge. The controlpanel and preview area can be changed by dragging the sides.



It has four groups of controls:

- Direction, contrast, midpoint
- Color one
- Color two
- Retouch levels: target lights, midtones or darks

Examples -



The Graduated Color plugin is an advanced digital version of traditional graduated color filters. In combination with retouch levels it can be used to tone the light.

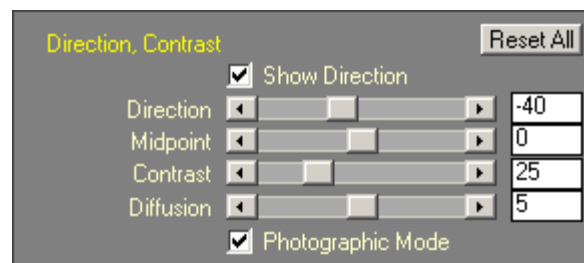
The Controls

Light Direction will rotate the direction of the graduation within a full circle. The slider ranges from -180 to 180 degrees. 0 is top vertical. +/-180 bottom vertical. -90 is left horizontal and 90 is right horizontal.

Direction Checking Show Direction will draw a line from the center of the preview in the direction of color one. This will only appear on the preview.

Contrast Contrast will determine the fade-out of the one or two colors and how hard they approach the midpoint. In the following example we only used color one.

Please note that the subtle graduations get lost when



Midpoint

compressing to JPEG for webpages.



Contrast 0



Contrast 50

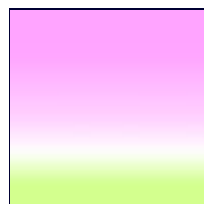


Contrast 100

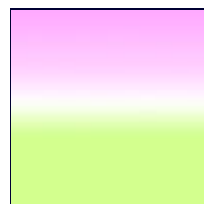
Midpoint will determine the ratio between color one and color two. If you only have one color, it will spread the color more or less over the image depending on contrast. In the following examples contrast was set high, to 50 in all cases, for the sake of clarity. Again please remember the subtle graduations get lost when compressing the images for the web.



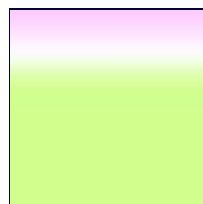
Midpoint -100
Only color one



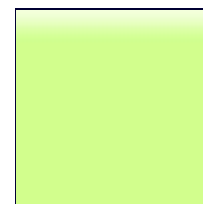
Midpoint -50



Midpoint 0



Midpoint 50



Midpoint 100
Only color two

Color One & Color Two

The plugin allows you to have one or two colors opposite each other. By checking "Color One" or "Color Two" you turn either color on. The long colored rectangle shows the filter color. You can change the filter color in four ways:

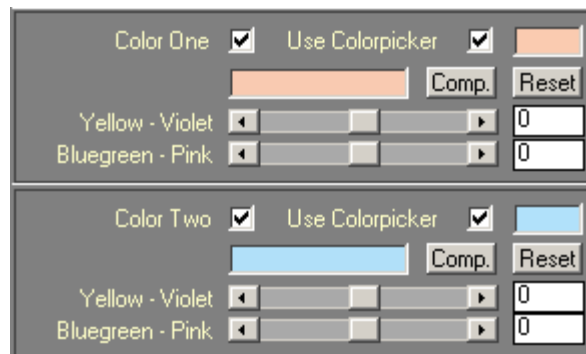
1. Use Color picker. When checked, this will add the color of the small rectangle to the filter color. If you activate a color picker, you can click in the rectangle to get a standard color picker dialog from which to choose a color.

2. Yellow - Violet slider. This will change the filter color with either of the complementary colors yellow or violet.

3. Blue green - Pink slider. This will change the filter color with either of the complementary colors blue green or pink.

4. Complementary button (Comp.). Clicking this button will set the color to the complementary of the other filter color. If you click "Comp." for Color Two, then color picker two will be set to the complementary of color picker one, and the two sliders will be set to the complementary of the sliders for Color One.

The filter color will be the sum of the two sliders and of the color picker, if "Use Color picker" is checked. This last detail means you can switch between two variations by adding, or not adding, the color from the color picker.



Use Color picker

Yellow - Violet

Blue green - Pink

Comp.

Retouch Levels

Retouch Levels is common to many Powerretouche plugins. It lets you target the effect to various values of the image.

Target Saturation lets you control how the color effect should be applied to saturated and/or unsaturated colors.



Adding a Blue Sky

Here the sky is obviously overexposed, which is a very common problem in pictures like this.



After applying a graduated blue color in the upper third of the image. Highlights only so as not to change the skintone of the faces.



Retouching the Illumination



In this image we used Illumination Editor to place the light on the top. (See tutorial on Illumination Editor).



After applying a graduated flesh tint to the upper lights and midtones.