

# Power Retouche

correct lens-distortion  
sharpen without artefacts ... & more...

Photo-retouching plug-ins

## A Photoshop plugin to edit brightness without losing color

Most photo software edits brightness (lightness) at the expense of color and contrast (try it in Photoshop). All plug-ins from Power Retouche have a solid foundation in color theory and edit pixels as integrated units of all aspects of color at once (full color wheel, hue, value, brightness, lightness, exposure, saturation, etc.).

- Power Retouche **Photoshop** plug-ins are also for Paint Shop Pro, Corel Draw, Illustrator, Fireworks and other graphic software or photo software (Mac & Win) see [list](#)



### Brightness Editor plugin - Tutorial

#### Benefits of the plugin

- Edit brightness (lightness) without losing color.
- Does not fade photos or images.
- Independent control of degree of color preservation.
- Option to target selectable hues or values for editing.

The Brightness Editor plugin works with these image modes (Windows and Mac)...  
8 & 16 bit / channel: RGB, Grayscale, CMYK.

#### Brightness Editor controls

This is the Brightness Editor plug-ins control panel at one third size. Click on the photo or the links to the right to see the plugin at full size. The filter has only two main controls:

1. Brightness % - increase or decrease brightness
2. Preserve Color % - range from 0 to 200%

In addition there are sliders for controlling the retouch.



#### Example -



**The Brightness Editor plugin is indispensable for editing brightness when you want full control over color preservation.**

**The central rectangle is the original.**

### The plug-ins two main controls

#### Brightness

This slider ranges from -100 to 100 and changes the image from virtually black at 0 and white at 100.

#### Preserve Color

This slider ranges from 0 to 200%. Set to 0 will produce an almost grayscale image and set to 200 will produce an image of more or less double color intensity. Don't misunderstand this slider to be a plain saturation tool. It is tightly linked with the brightness slider and will behave differently depending on the setting of the brightness slider. If you set it to 100% it will ensure the overall aesthetic color impression is unchanged no matter what changes are made to the brightness.

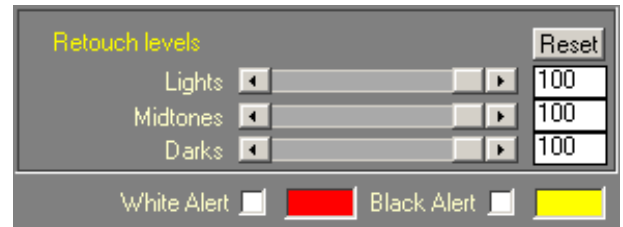
## Retouch levels

**Retouch Levels** Retouch levels is common to many Power Retouche plugins. The three sliders lets you control the percentage of effect in lights, midtones and darks.

**White Alert**

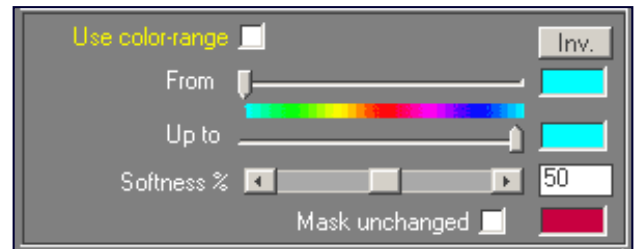
If you check White Alert areas in the preview that are pure white, will be masked. Likewise Black Alert masks pure blacks. You can change the color of the masks by clicking in the colored rectangles.

**Black Alert**



## Color range

**Use Color range** This is also common for several of the Powerretouches. Colorange will restrict filtering to colors in the range from the right side of the "From" slider to the left side of the "Up to" slider. This also if the "from" slider is to the right of the "to" slider. If you only selected what was in between, you would not be able to select everything except red (for example). **Mask unchanged** will apply a mask over areas outside the range.



**Inv (Invert selection)** This button will make the sliders swap place. For example you might set the slider to include only reds. If you press Inv. the sliders swap place and select everything but reds.

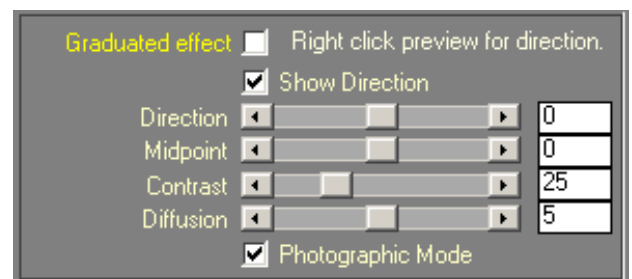
This is useful, for example, if you first want to edit selected foreground colors, then rerun the plugin to edit all other colors. The plugin remembers your settings between invocations, so on the second run just hit Inverse.

The two small colored windows show the selected color. If you apply a targetrange the color in these two windows will become lighter or darker according to the selected gray-range.

**Softness** This slider decides if the changes should be applied evenly to the entire colorange or if (and how much) it should fade out towards the extremes.

## Graduated effect

These controls are common for many of the Power Retouche plug-ins. Using graduated effect will cause the filter to apply it's filtering at full strength in one side of the image and then fade the effect out towards the other side. You can change direction by right clicking the preview. Midpoint will shift the balance between how large an area will be filtered at full strength and how much will have a faded out effect. Contrast will change the acceleration and spread of the fade-out.



In this example we applied a graduated effect towards the bottom, setting midpoint to the edge of the green foreground. This slight retouch gives a greater sense of depth in the image. In this case we used Photographic Mode, which is a very important feature when retouching because it gives retouches a far more natural look.



## Examples of brightness editing with color-preservation

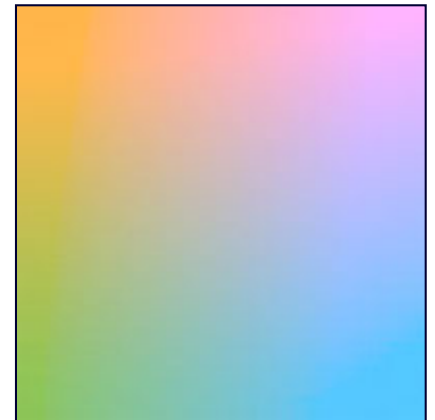
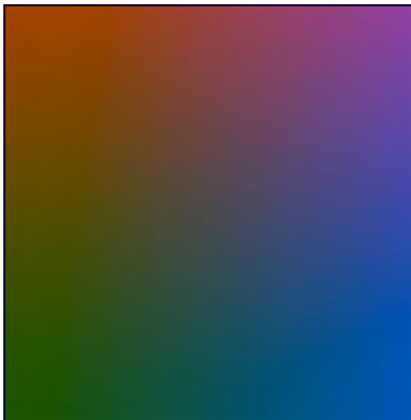
**Brightness  
+/- 50%**

Brightness -50%  
Preserve colors 100%

Original images

Brightness +50%  
Preserve colors 100%

**Preserve Colors  
100%**



**Brightness  
+/- 90%**

**Preserve Colors  
150%**

Brightness -90%  
Preserve colors 150%



Original images



Brightness +90%  
Preserve colors 150%

