


[HELP DESK](#) »

[VIDEO TIPS](#) »

[TUTORIALS](#) »

[DISCOUNTS](#) »

[PORTFOLIOS](#) »

[CONTACT US](#) »

[btrial](#) | [logout](#)

### Benefits

- [help desk](#) »
- [discounts](#) »
- [napp perks](#) »
- [advice desk](#) »
- [newsletter](#) »
- [plug-ins](#) »
- [actions](#) »
- [layer styles](#) »
- [tips & tricks](#) »
- [member tutorials](#) »
- [magazine center](#) »
- [benefit plans](#) »

### NAPP Store

[enter the store](#) »

### Resources

- [Photoshop World '06](#) »
- [Photoshop TV](#) »
- [Hall of Fame](#) »
- [product reviews](#) »
- [keyboard shortcuts](#) »
- [forums](#) »
- [educators](#) »
- [digital photography](#) »
- [design schools](#) »
- [job bank](#) »
- [tell adobe](#) »
- [wacom tablet](#) »

### CS Center

- [CS resource center](#) »
- [CS2 learning center](#) »

### Services

- [address change](#) »
- [contact us](#) »
- [new members](#) »
- [renewal](#) »

## Product Reviews » Black & White Studio

Welcome to the reviews area for Photoshop User; search or select a category to browse all the reviews available. You can personally rate any item by using the form at the bottom of every review.

### Categories

## Black & White Studio

### Review by Dave Huss

*Photoshop plug-in for black-and-white conversion*

PSU RATING: ★★★★★

Power Retouche has released Black & White Studio, one of 20 plug-ins they offer, which they claim is a complete digital darkroom and black-and-white photo studio that can convert color to black and white with the light sensitivity of standard professional films such as TRI-X, T-MAX, and others. I was impressed with how the filter reproduced the edginess I've come to associate with prints made from TRI-X film. If you don't want to use the established presets, you can experiment and set your own sensitivity curves.

To simplify the controls in the dialog, the plug-in has the filter controls divided into four functional groups: Film-film spectral sensitivity (as described above); Lens-colored lens filters that give you the ability to apply colored lens filters to the conversion process; Print allows you to edit the image on print level with accurate multigrade and exposure emulation plus contrast, balance, highlight and shadow editing; and Zone, which provides three selectable zones that offer detailed editing of local contrast and brightness.

It takes time to become proficient with this Photoshop plug-in but it comes with a 16-page guide with excellent preview samples. What makes this plug-in exciting is that because the newer Epson and HP printers offer extended capabilities for reproducing black-and-white photos, it's now possible to create black-and-white photos and not lose tonal detail when the photo is printed.

The Black & White Studio plug-in is sold individually or as part of the Power Retouche collection. It works with the following image modes: 8-bit (also called 24-bit), 16-bit, 48-bit, and 64-bit RGB, Grayscale, Duotone, and CMYK images. Power Retouche Photoshop plug-ins also work on Corel Paint Shop Pro, Corel Draw, Illustrator, Fireworks, and other graphic software that supports Adobe plug-ins.

**PRICE:** \$75

**FOR:** Mac and Windows

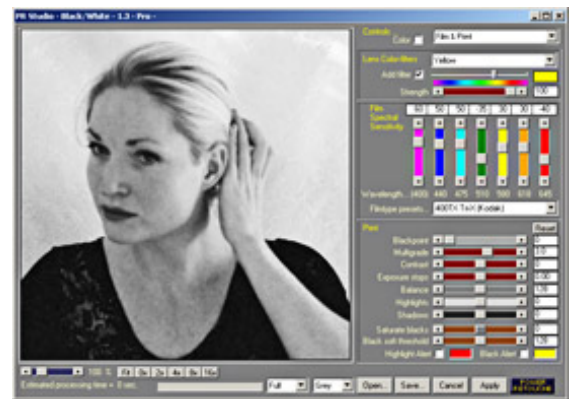
**FROM:** Power Retouche

**PHONE:**

**WEB:** [www.powerretouche.com](http://www.powerretouche.com)

**DATE:** January/February 2006

**PSU RATING:** 5



### member reviews »

no member reviews yet.

### write your review

Line and paragraph breaks automatic, e-mail address never displayed, text formatting HTML allowed.